

## TURBO 12 SPEED

Designed for competition with short wheel base, compact frame geometry and the newest state-of-the-art components. Yet priced one half less than comparable machines from Europe.

- **FRAME** Tange Champion #1 double-butted chromolly. Tange 1mm thick hi-tension lightweight lugs and investment cast seat lug with internal allen bolt. Sun Tour forged racing dropouts.
- **FORK** Tange Champion #1 chromolly AERO with 24mm diameter blade and investment cast crown. Sun Tour forged dropouts.
- **BRAKE** Dia Compe Aero Compe 300G compact side pull with Gran Compe lever, drilled and hooded. Flush mounted center bolts.
- **DERAILLEUR** Sun Tour Cyclone Mk II racing rear and front with hooded levers fitted to brazed-on bosses. Cable routing under bottom bracket.
- **CRANKSET** Sugino Aero Mighty Competition 42/52T. Crank arm size coordinated with frame size.
- **FREEWHEEL** Sun Tour Winner 13-24T 6 speed in silver.
- **CHAIN** DID Lanner with bevelled plates in silver and black.
- **PEDAL** MKS Esquartz Aero aluminum with black toe clips and competition straps.
- **HUB** Suzue Competition small flange, quick release with precision bearings, ground races, and heat treated axle.
- **SPOKE** Asahi stainless steel double-butted 14/15/14 gauge with chrome plated brass nipples.
- **RIM** Araya 20A aluminum "modular" style 19.6mm wide, anodized. Size 700C clincher designed to permit conversion to tubulars for racing.
- **TIRE** IRC Competition Z 25mm X 250gm skin type 100 psi rated. IRC 110gm tube with presta valve.
- **SEAT** Selle San Marco CONCOR suede racing, made in Italy.
- **SEAT POST** SR Laprade CT-P5 aluminum fluted "one key" adjustment.
- **HEADSET** Tange Aero Levin aluminum with precision bearings and ground races.
- **HANDLEBAR** SR Custom aluminum reinforced, with engraving. Cotton handlebar tape.
- **STEM** SR Aerox aerodynamic, cold forged, anodized. Extension coordinated with frame size.
- **SPECIAL FITTINGS** Investment cast brake cable guides on top tube; water bottle bosses on down tube; shift lever bosses; chain rest on seat stay.
- **FINISH** Iris and cherry metallic. Chrome plated fork tips and dropouts; fork crown; seat lug; right chain stay.
- **SIZES** 21, 22, 23, 24, 25 inch
- **WEIGHT** 21 $\frac{3}{4}$  lb. (21")

ALL NEW '83 MODELS

# CENTURIION

BIKE N' HIKE



## PRO TOUR 15

For the dedicated tourist who understands and appreciates all the subtle but necessary specifications required for reliable, enjoyable cross-country travel.

- **FRAME** Tange Champion #2 double-butted chromolly. Hi-tension thin lugs and Sun Tour forged double eyelet dropouts.
- **FORK** Tange Champion #2 taper gauge chromolly with exclusive new Centurion forged crown and Sun Tour forged double eyelet dropouts.
- **BRAKE** Dia Compe Gran Compe cantilever with drilled levers and gum rubber hoods.
- **DERAILLEUR** Sun Tour Cyclone Mark II GT rear and Superbe Tech ultra-low capacity front with Cyclone Mk II top mounted shifters. Cable routing over bottom bracket.
- **CRANKSET** Sugino Aero Tour triple 52/47/28 with low gear capacity of 24 teeth. Crank arm length coordinated with frame size.
- **FREEWHEEL** Sun Tour Pro Compe 14-26T 5 speed in silver finish.
- **CHAIN DID** Lanner bevelled link plate in black and silver finish.
- **PEDAL** SR Sil-Star aluminum in black anodized finish. Steel toe clips and heavy duty leather straps.
- **HUB** Sun Tour small flange forged aluminum with maintenance-free precision sealed bearings.
- **SPOKE** Asahi stainless steel 14 gauge. Front wheel 36; rear wheel 40.
- **RIM** Araya aluminum anodized 22mm wide. 27 inch.
- **TIRE** IRC 27 x 1 1/8" Touring Z 300gm skin type. 100 psi rated. IRC inner tube with schrader valve.
- **SEAT** Selle Royal Anatomic with suede leather cover, made in Italy.
- **SEAT POST** SR Laprade CT-P5 aluminum fluted, "one-key" adjustment.
- **HEADSET** Tange New Levin with precision bearings and ground races.
- **HANDLEBAR** SR custom aluminum reinforced with engraving and anodization.
- **STEM** SR Aerox aerodynamic, cold forged, anodized. Extension coordinated with frame size.
- **SPECIAL FITTINGS** Double eyelets on front and rear dropouts for rack and fenders. Bottle cage bosses on top and bottom of down tube. Seat stay chain rest, flush-mount rack bosses on seat stays, dual derailleur cable guides on BB, brake cable guides on top tube. Exclusive Centurion bosses on fork for mounting the Blackburn low rider pannier suspension system. Rigid, lightweight, heliarc welded aluminum rear rack included.
- **FINISH** Pearl black and ice blue metallic, each with contrasting colored head tube and decals. Clear final protective coat. Chrome plated dropouts, fork crown, seat stay tips, and right chain stay.
- **SIZES** 21, 22, 23, 24, 25 inch
- **WEIGHT** 25 lbs. (21")



## ELITE 12

The lightweight, components, and performance of a serious racing machine, yet priced only slightly more than the Le Mans 12.

- **FRAME** Tange Champion #2 double-butted chromolly three main tubes and hi-tension compact lugs. Separate brazed-on seat lug clamp, forged seat stay ends with Centurion "spoon" design. Forged racing dropouts.
- **FORK** Tange Hi-Tension blades, Centurion forged semi-sloping crown and forged dropouts.
- **BRAKE** Dia Compe AC500G aerodynamic side pull with drilled lever and gum hood. Flush mounted brake center bolts.
- **DERAILLEUR** Sun Tour Cyclone Mk II GT rear and front with top mounted shift levers. Cable routing over bottom bracket.
- **CRANKSET** Sugino Astron forged aluminum competition type 42/52 with crank arm length coordinated with frame size.
- **FREEWHEEL** Sun Tour PC-6S 13-28T 6 speed in silver finish.
- **CHAIN** DID Lanner bevelled link plate in black and silver.
- **PEDAL** SR Sil-Star aluminum in black anodized finish. Steel toe clips and leather straps.
- **HUB** Suzue Juno quick release small flange forged aluminum with anodized finish. Heat treated axles and precision bearings.
- **SPOKE** Asahi double-butted 14-15-14 gauge with chrome plated brass nipples.
- **RIM** Araya Model 20A aluminum "modular" style 19.6mm wide, anodized. Size 27 inch.
- **TIRE** IRC Competition Z 25mm x 250gm skin type. 100 psi rated. IRC inner tube with schrader valve.
- **SEAT** Selle Royal Anatomic, made in Italy.
- **SEAT POST** SR Laprade CT-P5 aluminum fluted, "one-key" adjustment.
- **HEADSET** Tange Aero with precision bearings and ground races.
- **HANDLEBAR** SR Custom aluminum engraved and anodized with black cotton tape.
- **STEM** SR Custom forged aluminum. Extension coordinated with frame size.
- **SPECIAL FITTINGS** Cable guides for brake and derailleurs. Bosses for water bottle, downtube shift levers, and chain rest.
- **FINISH** Sable and Royal Blue metallic with contrasting colored head tube and decals. Clear final protective coat.
- **SIZES** 21, 23, 25 inch
- **WEIGHT** 23¾ lb. (21")

## LE MANS 12

Amazing low weight and exciting performance have made this one of America's most popular bikes in its class for the last five years. If you study the components and styling you'll agree that no other bike comes close in quality and value.

- **FRAME** Tange Champion #5 chromolly with forged seat stay ends and dropouts.
- **FORK** Tange Hi-Tension tubes with Centurion forged semi-sloping crown and forged dropouts.
- **BRAKE** Dia Compe AC 500Q side pull with quick release and safety levers. Flush mounted center bolts.
- **DERAILLEUR** Sun Tour ARX aluminum aerodynamic wide ratio rear and front with stem mounted ratcheted shift levers.
- **CRANKSET** Sugino GT forged aluminum crank arm/spider and aluminum chainrings 40/52T. Crank arm length coordinated with frame size.
- **FREEWHEEL** Sun Tour Pro Compe 14-30T 6 speed in gold finish.
- **CHAIN** DID Lanner with bevelled plates in black and gold finish.
- **PEDAL** SR Sil-Star aluminum.
- **HUB** Suzue aluminum small flange quick release.
- **SPOKE** Asahi 14 gauge rustless with chrome plated brass nipples.
- **RIM** Araya 27 x 1 1/8" aluminum anodized.
- **TIRE** IRC 27 x 1 1/8" Touring skin type 300gm, 100 psi.
- **SEAT** Selle Royal Anatomic made in Italy. Special designs for man's and lady's model bicycles.
- **SEAT POST** SR Laprade CT-P6 aluminum.
- **HANDLEBAR** SR Custom aluminum, anodized with dense foam cushion grip on all models except the rose mixte which is equipped with the aluminum upright touring style handlebar pictured.
- **STEM** SR Custom Aero aluminum.
- **SPECIAL FITTINGS** Cable guides for brake and derailleurs. Bosses for water bottle and chainrest.
- **FINISH** Man's and lady's mixte: silver sand, sky blue, cherry metallic. Lady's mixte only: pearlescent rose. All models feature the exclusive Centurion clear final protective coat and color coordinated decals and accessories.
- **SIZES** Man's: 19 3/4, 21, 23, 25, 26 1/2 in. Mixte: 19, 21 in.
- **WEIGHT** 25 3/4 lb. (21")



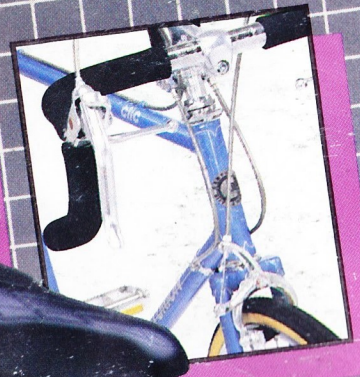
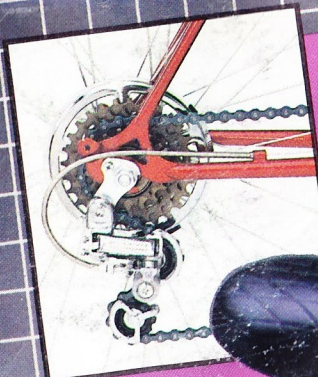


## ACCORDO

*Accordo is the perfect upgrade for sport riders whose previous ten speed experience created a yearning for the precision and performance associated with racing bikes. Yet, Accordo is priced only slightly higher than most "beginner" level 10 speeds.*

- **FRAME & FORK** Tange Champion #5 chromolly main tubing, Hi-Tension forks and stays.
- **BRAKE** Dia Compe AC 500 side pull with quick release and safety levers.
- **DERAILLEUR** Sun Tour AR-GT wide ratio rear and front with ratcheted stem mounted shift levers.
- **DERAILLEUR** Sun Tour AR-GT wide ratio rear and front with stem mounted ratcheted shift levers.
- **CRANKSET** Sugino GT forged aluminum crank arm/spider with steel chainrings 40/52T.
- **FREEWHEEL & CHAIN** Sun Tour Perfect 14-28T 5 speed. DID chain.
- **PEDAL** MKS steel balanced, chrome plated.
- **HUB & SPOKE** Suzue aluminum small flange hubs. Front quick release; rear nutted. Asahi rustless spokes.
- **RIM** Araya 27 x 1 1/8" aluminum anodized.
- **TIRE** IRC High Pressure Z gumwall, 27 x 1 1/4" 90psi rated.
- **SEAT** Selle Royal Anatomic made in Italy. Special designs for man's and lady's model bicycles.
- **SEAT POST** Stainless steel
- **HEADSET** Centurion steel, chrome plated.
- **HANDLEBAR** SR Custom steel with dense foam cushion grip on all models except the red lady's mixte in cherry, which is equipped with a steel upright touring style handlebar.
- **STEM** SR Custom Aero aluminum. Extension coordinated with frame size.
- **SPECIAL FITTINGS** Cable guides for brake and derailleur; bosses for water bottle and chain holder.
- **FINISH** Man's and lady's mixte: anthracite, cherry, and cobalt blue metallic. All feature the exclusive Centurion clear final protective coat and color coordinated trim.
- **SIZES** Man's: 19 3/4, 21, 23, 25 inch. Mixte with 27 inch wheel: 17, 19, 21 inch
- **WEIGHT**: 28 1/2 lb. (21")





## SPORT DLX (formerly Clic)

A rare opportunity to enjoy world renowned Japanese\* precision and quality for a surprisingly low price.

- **FRAME & FORK** Fully lugged high carbon steel tubing.
- **BRAKE** Dia Compe AC 500 side pull with safety levers.
- **DERAILLEUR** Sun Tour Honor rear and Spirt front with stem mounted shift levers.
- **CRANKSET & CHAIN** Sugino forged crank arms with steel chainrings 40/52T. DID chain.
- **PEDAL** MKS steel rat-trap.
- **HUB & SPOKE** Suzue steel nutted hubs. Rustless spokes.
- **RIM & TIRE** Araya 27 x 1 1/4" steel. IRC 27 x 1 1/4" High Pressure gumwall, 90 psi rated.
- **SEAT & POST** Padded comfort type. Steel post.
- **HANDLEBAR & STEM** SR Custom steel handlebar with dense foam cushion grip. SR Custom aluminum stem.
- **SIZES** Man's: 19 3/4, 21, 23, 25 inch Mixte: 19 inch \*Junior 24" wheel/18" frame boy's and mixte models are made in Taiwan.
- **FINISH** Pearlescent sky blue and black; Cherry metallic.
- **WEIGHT** 30 1/4 lb. (21")





## TRAC

*Designed as an all purpose competition machine, TRAC is our answer to the recent surge in the popularity of velodrome racing. TRAC offers the same performance and quality as European machines costing up to three times more.*

- **FRAME & FORK** Tange Champion #5 plain gauge chromolly complete set. Sun Tour forged track dropouts. The fork and seat stay bridge are drilled for brake mounting if desired.
- **DRIVETRAIN** Sugino Astron forged track crankset, Sun Tour steel rear sprocket, DID track chain.
- **HUB** Sun Tour Sprint 36 spoke large flange track.
- **RIM** Araya Red Label track, aluminum.
- **TIRES** Panaracer Merite tubulars.
- **PEDALS** SR SP-200AL track aluminum with aluminum toe clips and competition straps.
- **SEAT & POST** Kashima 5 Gold leather seat and SR Laprade CT-P5 aluminum seat post.
- **HANDLEBAR & STEM** SR aluminum track bend with forged aluminum stem.
- **HEADSET** Tange Aero Levin.
- **FINISH** Anthracite metallic with black trim.
- **SIZES** 21, 22, 23, 24 inch
- **WEIGHT** 19 lb (22")



## EXERCIZER

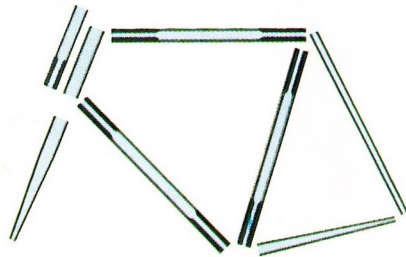
*Now you can enjoy Centurion precision and quality in an exercizer. Momentum and smooth resistance are achieved through the ample sized wheel and caliper rim brake. The fine adjustment knob controls brake tension. A timer and speedometer are included to promote scientific exercise levels. Finished in lustrous pearlescent white enamel.*

# 1983 CENTURION SPECIFICATIONS AND MATERIALS

## Tange Chromolly Tubing

**Centurion** bicycles from Japan are constructed of Tange steel tubing, considered one of the finest bicycle materials in the world. Translated into bicycle handling, this means you will enjoy unusually sensitive feel-of-the-road and pedal response. The superior quality of Tange tubing is also reflected in the bicycle's smooth finish and immaculate brazing.

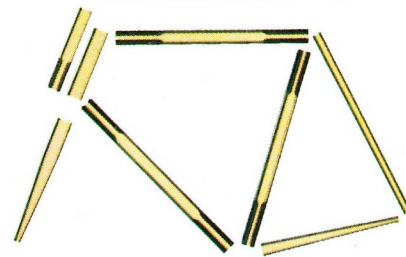
The **Centurion** design and frame building team works painstakingly with Tange engineers to achieve the ideal blend of tubing, lugs, and brazing temperatures for each model. When combined with the appropriate geometry and components, the result is a perfectly integrated machine with markedly superior performance.



### Champion No 1

Double-Butted CHROMOLLY tubes throughout for road racing. Tange's lightest "street legal" tube set, weighing only 2.22Kg. **TURBO**

Tube	Tube wall thickness
Top	0.8 - 0.5 - 0.8mm
Down	0.8 - 0.5 - 0.8mm
Seat	0.9 - 0.6 - 0.9mm



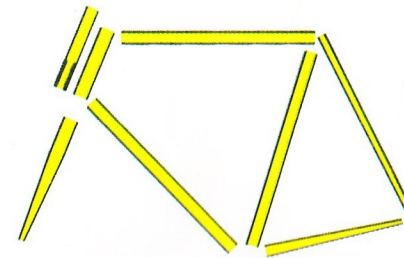
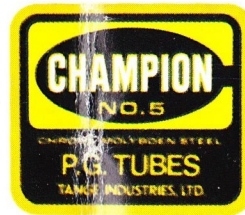
### Champion No 2

Double-Butted CHROMOLLY tubes for touring. Lightweight but slightly thicker to accommodate heavier load factor of touring. Complete set weight: 2.29Kg.

**Pro Tour 15:** Complete set No 2

**Elite 12:** 3 main tubes No 2

Tube	Tube wall thickness
Top	0.9 - 0.6 - 0.9mm
Down	0.9 - 0.6 - 0.9mm
Seat	0.9 - 0.6 - 0.9mm

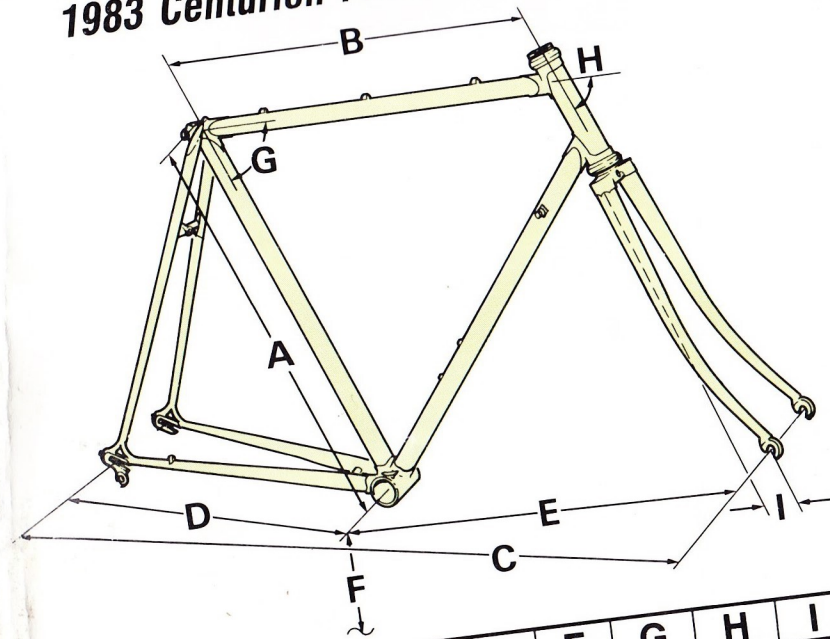


### Champion No 5

Plain gauge 0.9mm thick CHROMOLLY tubes for lightweight sport cycles.

**Le Mans 12 and Accordo:** Main tubing  
**Trac:** Complete set. Weight: 2.46Kg

## 1983 Centurion Frame Geometry



	A	B	C	D	E	F	G	H	I
<b>Turbo</b>	23"	570mm	995mm	410mm	595mm	68mm	73°	73°	40mm
<b>Pro Tour</b>	23"	585mm	1041mm	435mm	595mm	68mm	73°	73°	45mm
<b>Elite</b>	23"	570mm	1005mm	420mm	605mm	65mm	72.5°	72.5°	50mm
<b>Le Mans</b>	23"	557mm	1030mm	435mm	605mm	65mm	72.5°	72.5°	50mm
<b>Accordo</b>	23"	557mm	1030mm	435mm	605mm	65mm	72.5°	72.5°	50mm
<b>Spt. Dlx.</b>	23"	557mm	1030mm	435mm	605mm	65mm	72.5°	72.5°	50mm

Note: Certain measurements vary according to frame size.

### Change in specifications, optional equipment

Centurion bicycles represent the state-of-the-art. Therefore, as superior components and designs become available during the model year, specifications may be changed without notice. All models supplied with federally approved reflectors and spoke guard (not pictured). Kickstands are a dealer installed option. Weights listed do not include reflectors and kickstand.